



Rel.3.3

AI Trainer Reiko

The Various AI Stories



それぞれのAI物語

<https://ai-story.club/aistory/>



System Explanation

Purpose of Use



1. When companies create documents or proposals efficiently and utilize them for management.



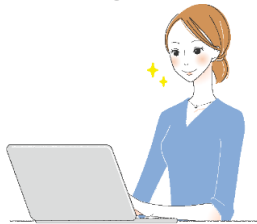
2. When content creation companies create content, conduct market research via the web, and use it for sales and marketing.



3. When AI is used on the web to innovate AI schools or health sites.

Usage Image

1. In-house administrative processing



2. Content creation



3. AI School
(example of innovation)

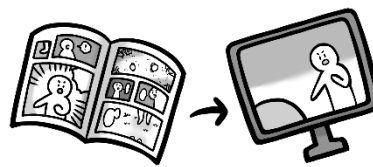


System Structure

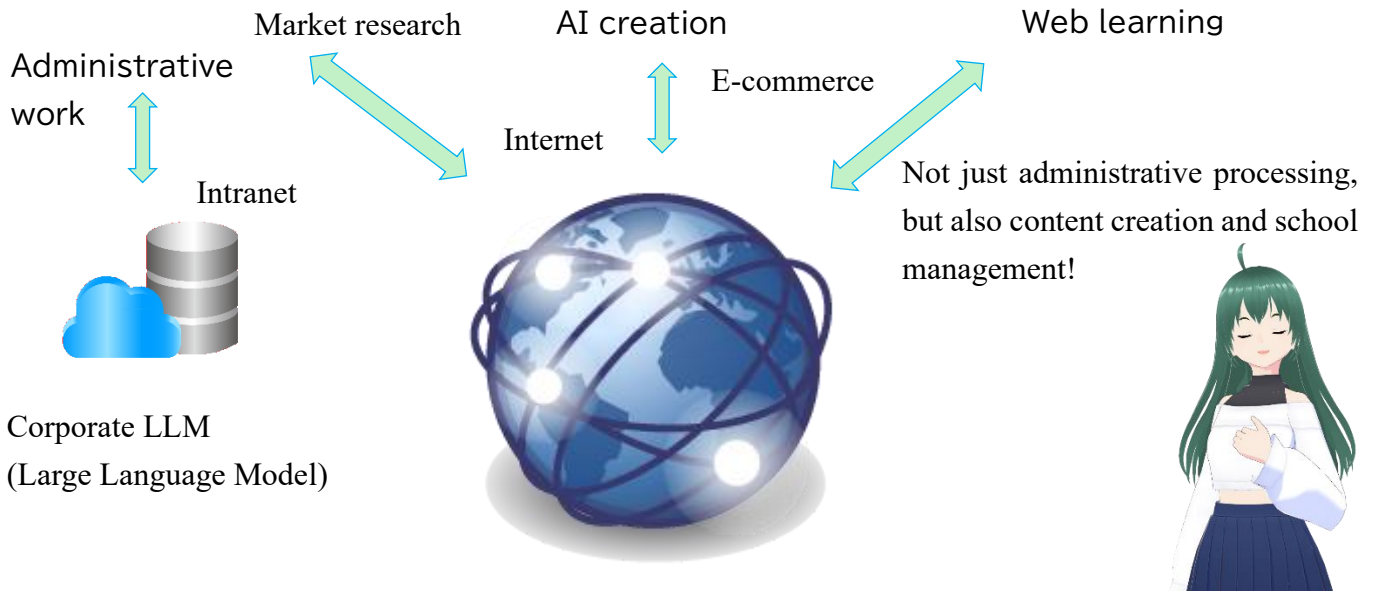
1. In-house administrative processing



2. Content creation



3. AI School



AI's Task Execution

When humans meet:
4 to 5 meetings a day!

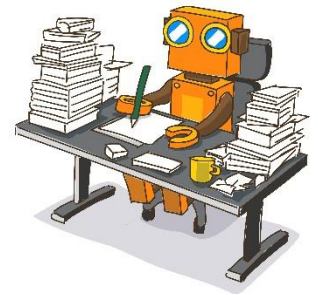


AI works 24 hours without complaint!!

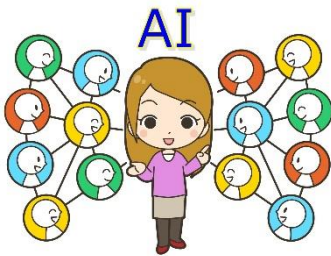


Documents that take a human a day to write, AI completes in 10 minutes!

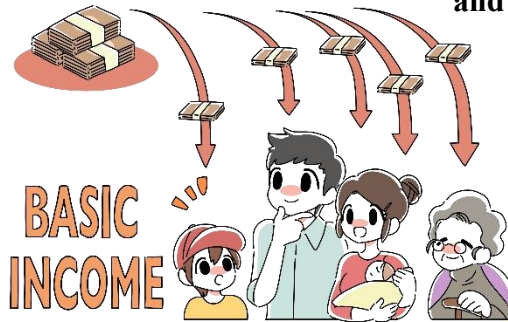
AI meetings take less than 10 seconds!



Basic Income



Issue your own cryptocurrency and keep earning!



Create many AI avatars
and let them work for you!

AI1



AI2



Customized for corporate use

1. It is not office management software, but software that generates sales. At the same time, use a number of inexpensive PCs to increase productivity.
2. Efficiently perform specialized operations, such as content production and office document creation, to reduce labor costs.
3. You can create an AI avatar in a web app, which will become your AI alter ego, work with AI, and get paid.
4. You can build your own specialized original generative AI by producing LLMs in-house, so you can differentiate yourself from other companies.
5. This one PC works like 10 people. If the lease fee is \$5,000, \$50 is the salary.

PC Client



Below is a list of features for the Basic and Enterprise versions. Features marked with a circle (○) are standard.

Note: B=Basic E=Enterprise

	Menu	Description	B	E	Select
Basic	Digital Textbook	View voice-chat AI textbooks.	○	○	—
	My Page	Manage profiles, avatars, sales, etc.	○	○	—
	Simple Check	Create forward inference rules, etc.	○	○	—
	GPT Control	Operate ChatGPT, DALL-E API.	○	○	—
Content	Input	Input via voice or existing content for proofreading.	○	○	—
	Output	Convert and output to the target content.	○	○	—
Web	AI You Web	AI You があなたに代わり仕事する。	—	—	A
Analysis	Image Analysis	Perform deep learning and analysis of images.	—	○	—
	Text Analysis	Register dictionary, perform deep learning, edit LLM.	—	○	—
Application	HP/E-commerce	Create websites with no code, perform SEO, etc.	—	—	B
	Marketing Research	Conduct market research, planning, implementation, and strategy.	—	—	C
	Forex, Stocks	Forex, stock trading	—	—	D
	Telemedicine	Preventive Medicine	—	—	E
	AI Graphics Editor	Character Special Effects	—	—	F

※Precautions: Forex, stocks, lotto automatic trading, and telemedicine monitoring systems are separate stand-alone operations. The DB is common.

AI Client

Your Enterprise Business AI Web App. Using the web application library "Nacchan"



Talking robot "Tona"
Built-in Growth-Based Artificial Intelligence



Automated stem cell culture system



AI Server

AI You Web App Features

- Basic Set Membership registration
- New member registration.
- Login Member's login.
- Logout Logs out the member.
- What to do today's action.
- Self-check to confirm.
- AI Chat Text chat.
- Image Generation Create an image. I
- Set Enter the original story.
- Image Analysis: Deep learning of images.
- Content Output in its final form.
- Voice Chat by voice.
- Voice recorder voice texting.
- Automated Homepage & E-Commerce
- Market research, commodity value research, etc.
- * Functions will be added sequentially. *
- Please refer to the separate list of prices.



AI Server
"Shinichiro"



AI Server 仕様

- Web PHP, C++, Python
- LLM, Dataset
- Pytorch, Tensorflow, Keras
- AI library、Math library
- WebRTC(TV phone)
- Database MySql
- OS Ubuntu
- CPU Intel i7
- Memory 16G~
- GPU RTX3060~

Menu Description

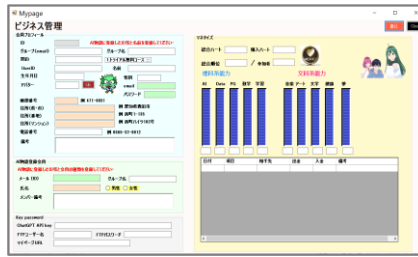
Basic Menu Standard basic features. With this, you can perform normal AI operations.

E-Textbook



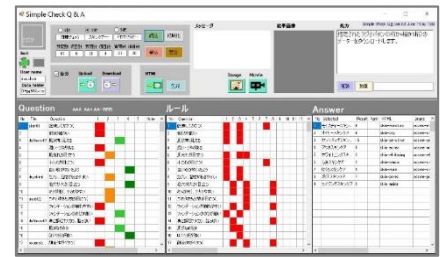
Read the e-textbook and you can ask questions by voice.

My Page



Manage your AI avatar and sales, cryptocurrencies, etc.

Simple Check



A system that provides answers through forward-looking inferences.

GPT



The core control part that controls ChatGPT.

Content



You can make the display content like a picture book.

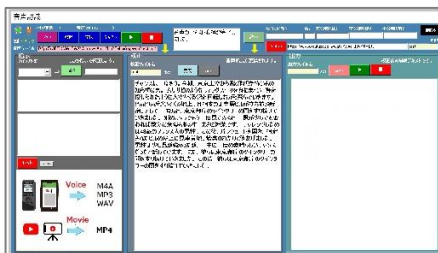
AI You



AI You works instead of you, for example, the doctor, lawyer, etc.

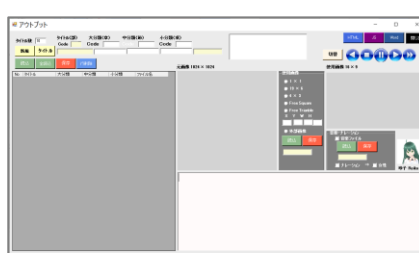
Expanded Menu Create and sell new AI-generated content from voice or original text.

Input



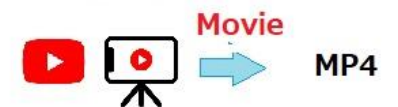
Voice recognition is set up ⇒ AI corrects and saves.

Output



You can convert the output files, slide display, or output to Word or HTML.

Create content using voice recognition!



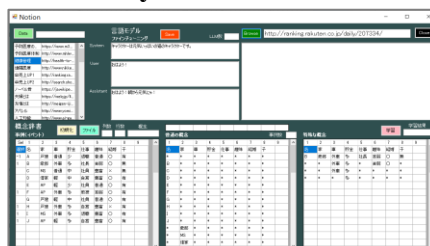
Analysis Menu Convenient office and management functions in the analysis menu.

Image Analysis



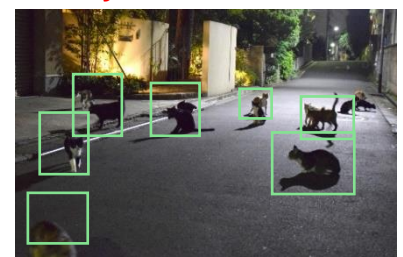
The image analysis converts text to digital form.

Text Analysis & LLM



Make the original LLM and dictionary registration.

Measures against stray cats!

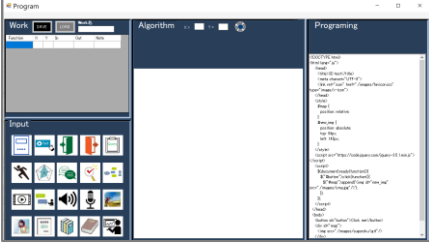


Several pre-trained models are installed.

Applications & Dedicated AI Software

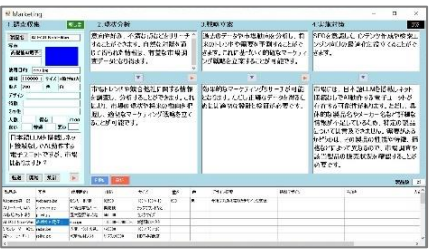
Application Menu You can make e-commerce website and marketing research.

Website & E-Commerce




Create web applications without coding.

Marketing Research



Web questionnaires ⇒ Manage market research.

**Issue your own digital currency!
Specialization and differentiation to increase sales!**



Dedicated AI Software Products

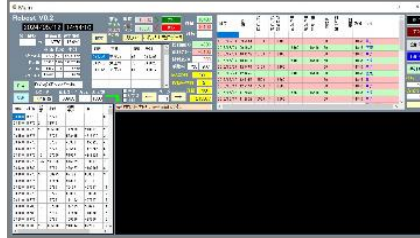
Customizable based on user needs!

AI Home Medicine "Eris"



Preventive healthcare, health management, and remote medical system.

FX & Nikkei 224 Stock Trading System



AI stock trading system for Nikkei 225 stocks.

Remote Monitoring System



Remote monitoring system for caregiving companies.

AI Story Textbook Series

Each AI story textbook will be released as part of an ongoing series.

No.	Titlt	Content
No.1	Simple Check & ChatGPT	Introduction to forward-looking inference and integration with generative AI like ChatGPT.
No.2	AI Home Medicine: Beauty, Health & Longevity	Introduction to the preventive and regenerative screening capabilities of the "Eris" remote medical software.
No.3	AI Programming	Using Python, VB.NET, PHP, JavaScript, LLMs, etc. for AI programming.
No.4	Original LLM	Fine-tuning generative AI, designing, implementing, and using original LLMs.

Each AI Story Textbook








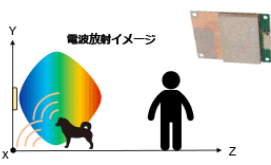

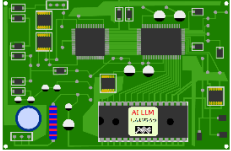
Books will be released to further explore advanced applications of generative AI. Special emphasis will be placed on using and customizing original LLMs for specialized needs and differentiation.



Related Hardware Products

Even without the AI Server "Shinichiro," you can still use Reiko, the AI Trainer, to learn.

Legend: Items in **red** are currently available products. Items in **blue** are planned hardware.

Product Name	Appearance	Description
Webmate Shinichiro		AI/IoT Device with built-in camera, temperature, humidity, pressure, and light sensors. Includes input/output control, and external control is possible. Can be controlled via smartphone. Integrated Wi-Fi and BLE interfaces.
Hydroponic System "Tonadekoreta"		Hydroponic kit and control software, made to order. Used for growing leafy greens in hydroponic beds and larger vegetables in "Tonaton Bags." Suitable for learning about smart farming.
AI Server Shinichiro		AI learning server with multiple NVIDIA GPUs installed. Quickly trains AI data used in AI ECUs and other applications. The OS is Ubuntu or Windows Server. The learning operation software is the "AI Trainer Reiko," used as a client.
AI Trainer Reiko		AI training and setup software. Handles various AI processing tasks: (1) Generative AI control, Simple Check, etc.; (2) Deep learning for images and text; (3) No-code programming.
AI Robot "Tona"		AI voice chat robot. Responds to voice questions and can be equipped with external mouse and keyboard. Built-in sensors for temperature, humidity, pressure, and light. Includes monitoring software and HDMI output.
Monitoring Radar "Anshin"		Health monitoring sensors that use millimeter-wave radar to measure breathing and heart rates of multiple individuals. AI processing visualizes the data, which can be used for monitoring, security, disaster prevention, and health management.
Automated stem cell culture system		(1) 3D culture method using petri dish 2D cells and flasks. (2) Clean bench recently automatic detection and sterilization treatment. (3) Removal of defective cells by robot and AI image analysis.
ECU Board Nobi-Wan		ECU (AI-integrated electronic control unit). Used in IoT devices or mobile terminals. The AI runs standalone without an interface. Applied in autonomous driving, home AI electronics, and medical equipment.

Distributors

Planning and Design: Anshin

Operation: TSD Co., Ltd.

Try Success Dream Administration Office

Company Website: <https://tsd.co.jp/>

Contact: Nobuyuki Oiwa (oiwa@tsd.co.jp)

USA Contact: Dr. Eric O. Flores(eric@tsd.co.jp)